



Delaware Opportunities Inc
Child Care Resource and Referral
 35430 State Highway 10
 Hamden, NY 13782
"Building Excellence in Child Care"

Phone: 607-746-1620 or Toll Free 1-877-746-2279
 Fax: 607-746-1648
 Website: www.delawareopportunities.org
 Email: daycare@delawareopportunities.org

2017 Report on Child Care in Delaware County: Supply and Demand, Gap Analysis and Provider Expansion Plan

2017 Child Care Supply in Delaware County

Delaware Opportunities Inc. Child Care Resource and Referral (CCRR) maintains data regarding the type, number, and location of regulated child care programs in Delaware County and the number of child care slots available in these programs: 6 weeks to 2 years old, 2 years old to 5 years old and 5 to 12 year olds. The child care supply in Delaware County as of December, 2017 is shown in the chart below broken down by type of regulated care and the number of slots available by age of the child. In Delaware County, most of the children in regulated care ages 6 weeks to 2 years old are enrolled in family child care settings.

Type of Care in Delaware County	# of Providers	Slots for Infants (6weeks-2yr)	Slots for Pre-School (2yr-5Yr)	Slots for (5+-12yr old)	Total slots
Family Day Care	25	50	100	50	200
Group Family Day Care	7	28	56	22	106
School- Age child care	4	-----	-----	239	239
Child Day Care Centers	3	110	130	59	299
Total	39	188	286	370	844

Chart 1. In 2017 the number of child care slots in Delaware Co. by type of regulated child care and age of child.

Child Care Slots Offered, by Type and Geography

Below is information on the availability of regulated child care in different towns of Delaware County, by type of care. It shows the number of slots provided in these different types of regulated care, categorized by the age of the child. The information was collected as of December, 2017 by the CCRR. Child care providers of all types below have the option of enrolling any number of children into their programs as long as they do not exceed their maximum capacity. The following chart reflects regulated provider's total capacity slots. Head Start figures are included in the chart directly following this one.

Town in Delaware Co.	Type of Care	# of providers	Infants Age: 0 up to 2 yrs.	Preschoolers Age: 2-5 yrs.	School age 5 yrs. – 12 yrs.
Andes	family day care	1	2	4	2
	group family day care				
	school age				
	child care center				
	Total Slots:		2	4	2
Bovina	family day care				
	group family day care				
	school age				
	child care center				
	Total Slots:		0	0	0
Colchester	family day care	1	2	4	2
	group family day care				
	school age				
	child care center				
	Total Slots:		2	4	2
Davenport	family day care	4	8	16	8
	group family day care	1	4	8	4
	school age				
	child care center	1	54	42	18
	Total Slots:		66	66	30
Delhi	family day care	3	6	12	6
	group family day care				
	school age				
	child care center:	1	20	45	20
	Total Slots:		26	57	26

Deposit	family day care				
	group family day care				
	school age				
	child care center				
	Total Slots:		0	0	0
Franklin	family day care	1	2	4	2
	group family day care	1	4	8	4
	school age				
	child care center				
	Total Slots:		6	12	6
Hamden	family day care	1	2	4	2
	group family day care				
	school age				
	child care center				
	Total Slots:		2	4	2
Hancock	family day care				
	group family day care				
	school age	2			170
	child care center				
	Total Slots:				170
Harpersfield	family day care				
	group family day care				
	school age				
	child care center				
	Total Slots:		0	0	0
Kortright	family day care				
	group family day care	1	4	8	4
	school age				
	child care center				
	Total Slots:		4	8	4
Masonville	family day care				
	group family day care				
	school age				
	child care center				
	Total Slots:		0	0	0
Meredith	family day care				
	group family day care				
	child care center				
	Total Slots:		0	0	0

Middletown	family day care				
	group family day care				
	school age				
	child care center				
	Total Slots:		0	0	0
Roxbury	family day care	1	2	4	2
	group family day care	1	4	8	0
	school age				
	child care center				
	Total Slots:		6	12	2
Sidney	family day care	5	10	20	10
	group family day care	2	8	16	8
	school age				
	Child care center	1	36	43	21
	Total Slots:		54	79	39
Stamford	family day care	1	2	4	2
	group family day care	1	4	8	2
	school age				
	child care center				
	Total Slots:		6	12	4
Tompkins	family day care	1	2	4	2
	group family day care				
	school age				
	child care center				
	Total Slots:		2	4	2
Walton	family day care	6	12	24	12
	group family day care				
	school age	2			69
	child care center				
	Total Slots:		12	24	81

Totals	Child care facilities	Infant /Toddler slots	Preschool slots	School age slots
	39	188	286	370

Chart 2. Shows the number of child care slots available in 2017 by Delaware County township and age of children.

HEAD START

None of the Head Start programs are full day so are not considered when assessing the availability of child care slots because working parents would need wrap around child care for their children attending Head Start. Walton, Fishes Eddy and Sidney have classrooms that are six hours. All other classes are four hours.

Township	Village	Preschool slots	Children in Care	Openings	Hours
Davenport	Davenport	17	15	2	8:30 a.m. - 1:30 p.m.
Delhi	Delhi	20	20	0	8:30 a.m. - 1:30 p.m.
Deposit	Deposit	18	18	0	8:30 a.m. - 1:30 p.m.
Deposit Home Base	Deposit	12	12	0	8:30a.m. - 2:30 p.m.
Franklin	Franklin	14	10	4	8:30 a.m. - 1:30 p.m.
Hancock	Fishes Eddy	17	12	5	8:30 a.m. - 2:30 p.m.
Arkville Classroom 1	Roxbury	17	13	4	8:30 a.m. - 1:30 p.m.
Arkville Classroom 2	Roxbury	17	14	3	8:30 a.m. - 1:30 p.m.
Grand Gorge	Roxbury	17	13	4	8:30 a.m. - 2:30 p.m.
Sidney Classroom 1	Sidney	18	18	0	8:30 a.m. - 2:30 p.m.
Sidney Classroom 2	Sidney	18	16	2	8:30 a.m. – 2:30 p.m.
Walton Classroom 1	Walton	18	14	4	8:30 a.m. - 2:30 p.m.
Walton Classroom 2	Walton	18	18	0	8:30 a.m. – 2:30 p.m.
Walton Home Base	Walton	12	9	3	8:30 a.m. – 2:30 p.m.
TOTAL		233	202	31	

Chart 3. Head Start available slots for enrollment at each of the Head Start centers and hours of operation.

Child care referral requests

Delaware Opportunities Inc. CCRR assists families in searching for child care that fits their needs. When appropriate the CCRR supplies the contact information for regulated child care programs to families. The CCRR uses NACCRRAware to gather data on families' child care needs as they relate to regulated child care program.

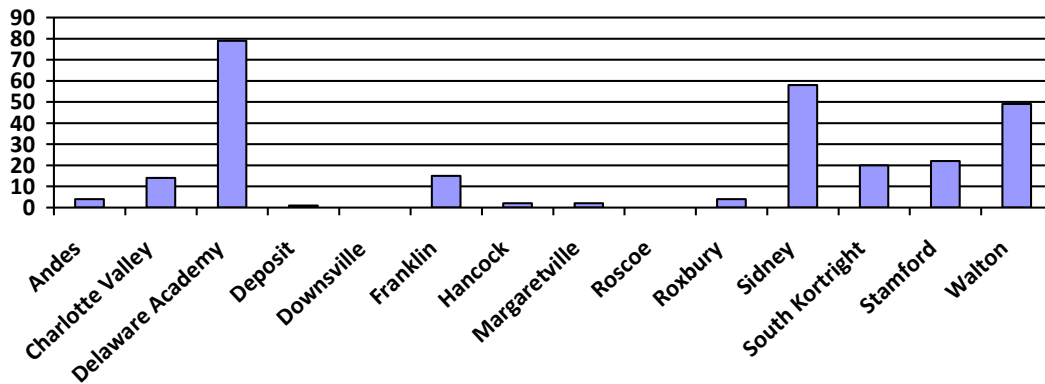
In 2017 the number of families who received referrals for child care was 129 for 220 children. Child care referrals are given by school district. The following chart shows the number of referrals given out by school district (where the family is looking for care). Please note the towns in which the following schools are located:

- Charlotte Valley located in Davenport, NY
- Downsville Central School in in the Town of Colchester
- Delaware Academy located in Delhi, NY
- Margaretville Central School located in the village of Margaretville which is in the town of Middletown.

Name of School District	# of Referrals given
Andes Central School	4
Charlotte Valley Central School (Davenport, NY)	14
Delaware Academy (Delhi, NY)	79
Deposit Central School	1
Downsville Central School	0
Franklin Central School	15
Hancock Central School	2
Margaretville Central School (Town of Middletown)	2
Roscoe Central School	0
Roxbury Central School	4
Sidney Central School	58
South Kortright Central School	20
Stamford Central School	22
Unatego Central School	0
Walton Central School	49

Chart 4. The number of child care referrals given to families in 2017 by Delaware County School Districts.

Number of referral requests given by School district in 2017



Graph 1. The graph shows the distribution of child care referrals by Delaware County school district given to families in 2017.

Parent Requests

Upon reviewing the requests Delaware Opportunities Inc. Child Care Resource and Referral (CCRR) received in 2017 the following statistics regarding parent referral requests were gathered. The NACCRRAware (referral) database is only for regulated providers and does not include legally-exempt provider requests. Note: this data does not include consultations for subsidy. Parents seeking subsidy may not want referrals, as they may already have child care secured.

In 2017 a total number of 220 children and 129 families were served through the CCRR referral service.

Referrals by Provider Type (includes duplicated count, 220)

- Family Child Care 97%
- Group Family Child Care 80%
- Child Care Center 70%
- School Age Program 11%
- Preschool Program 8%

Requests by Age of Child (includes duplicated count, 212)

- Infants (ages under 2yr) 27%
- Preschool children (ages 2yr-5yr) 47%
- School age (ages 6yo-12 yr) 25%

Schedule Type Requests: (219 requests)

Percentages indicate for which schedule parent needs care.

Full-time	53%
Part-time	9%
Both	16%

Extra Care Services: (62 requests)

Percentages indicate for which times parent needs care.

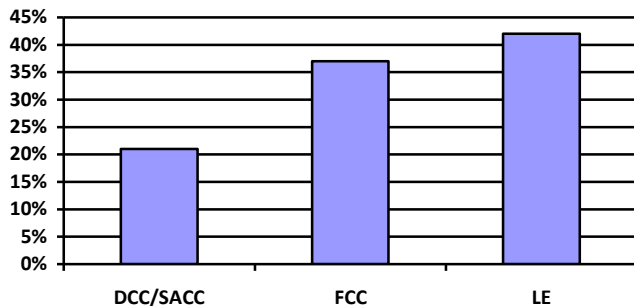
After School	58%
Before School	32%
Rotating Schedule	0
Drop in	10%
Temporary/Emergency	0

Additional Care Services (19 requests)

- Evening care 36%
- Weekend care 63%
- Snow days 0
- Flexible hours 0
- Mildly Ill/Sick 0
- Overnight care 0

The following information has been collected from the Child Care Time and Attendance system and indicates the type of care being used by families receiving child care subsidy:

Day Care Center (DCC)/ School- Age Child Care (SACC)	21%
Family Child Care (FCC)	37%
Legally- Exempt	42%



Graph 2. Types of child care used by families receiving child care subsidy.

Summary of the 2017 Demand for Child Care in Delaware County

Based on parent referral request, the data indicates:

- A high demand for preschool care
- A high need for fulltime care and after school care
- A demand by a segment of the work force for evening and weekend care
- Almost half of the children in families receiving child care subsidy are placed in informal legally exempt care. Those in the field of child care and advocates for quality child care are concerned that legally exempt care may not be of the highest quality.

Gap Analysis

Using the information from the Delaware Opportunities Inc. CCRR 2017 Child Care Supply and Demand report, the gaps in child care are the following:

- Most of the child care referral request were for the Walton, Sidney and Delhi area.
- There is a need to develop child care providers in Delhi, South Kortright and Stamford.
- There is a need to develop child care providers in towns without registered care.
- There is a need for child care for preschoolers.
- There is a need for child care providers who are willing to care for children during non-traditional hours.

Provider Expansion Plan

To meet the gap in child care slots the Delaware Opportunities staff will:

- Recruit child care providers through outreach events such as the Delaware Opportunities Inc.'s annual Children's Festival, as well as press releases, fliers, speaking to community groups and agency Facebook postings.
- Educate the public about the importance of quality child care through outreach events, press releases, email blasts, the CCRR's quarterly *Family Pages*, the agency's Facebook postings, speaking to community groups and provide information at the Delaware Opportunities Inc. Annual Children's Festival.